

Elabscience®

One-step TUNEL In Situ Apoptosis Kits

High Quality of Products
Worthy of Your Trust 🍑

Time-saving

Labor-saving

Safe and Non-toxic

Cost-effective

■ Advantages



Cost-effective

key components are self-developed with more stable quality and more competitive price



Safe and non-toxic

No dimethylarsinic acid, non-toxic and harmless to operators and the environment



Wide application

Applicable to tissue samples (paraffin section, frozen section) and cell samples (cell smear, cell slide)



Multiple choices

FITC/ Elab Fluor® 488/ Elab Fluor® 594/
Elab Fluor® 647/ Elab Fluor® 555

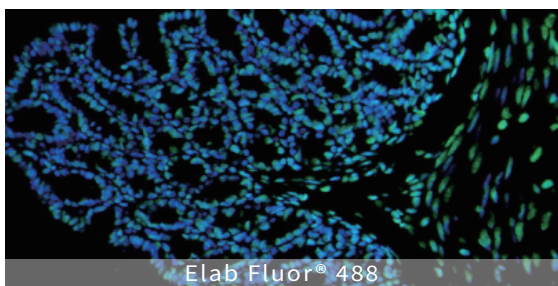


Easy to operate

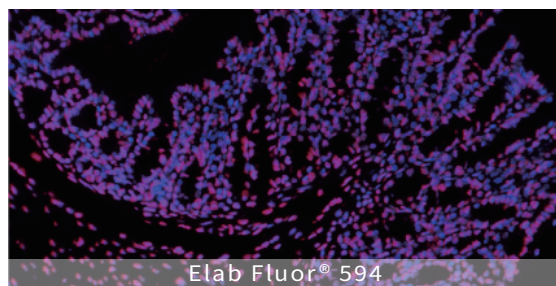
One-step dyeing, saving time and effort

■ Experimental results

— Paraffin section —



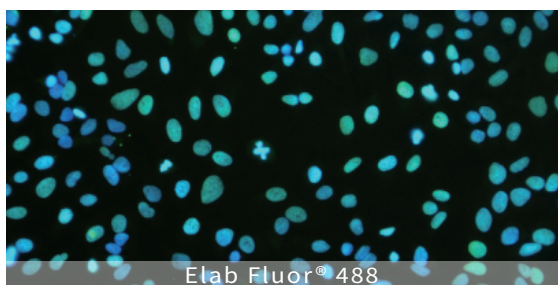
Elab Fluor® 488



Elab Fluor® 594

Mouse colon, treated with DNase I for 10 min

— Cell slide —



Elab Fluor® 488



Elab Fluor® 555

Hela cells, treated with DNase I for 10 min

■ In Situ Apoptosis Detection

• One-step TUNEL In Situ Apoptosis Kit •

Cat. No.	Product	Size
E-CK-A320	One-step TUNEL In Situ Apoptosis Kit (Green, FITC)	20/50/100 Assays
E-CK-A321	One-step TUNEL In Situ Apoptosis Kit (Green, Elab Fluor®488)	20/50/100 Assays
E-CK-A322	One-step TUNEL In Situ Apoptosis Kit (Red, Elab Fluor®594)	20/50/100 Assays
E-CK-A324	One-step TUNEL In Situ Apoptosis Kit (Red, Elab Fluor®647)	20/50/100 Assays
E-CK-A325	One-step TUNEL In Situ Apoptosis Kit (Red, Elab Fluor®555)	20/50/100 Assays

■ Other TUNEL products Recommendation

• One-step TUNEL Flow Cytometry Apoptosis Kit •

Cat. No.	Product	Size
E-CK-A420	One-step TUNEL Flow Cytometry Apoptosis Kit (Green, FITC)	20/50/100 Assays
E-CK-A421	One-step TUNEL Flow Cytometry Apoptosis Kit (Green, Elab Fluor®488)	20/50/100 Assays
E-CK-A422	One-step TUNEL Flow Cytometry Apoptosis Kit (Red, Elab Fluor®594)	20/50/100 Assays
E-CK-A423	One-step TUNEL Flow Cytometry Apoptosis Kit ((Blue, Elab Fluor® Violet 450)	20/50/100 Assays
E-CK-A424	One-step TUNEL Flow Cytometry Apoptosis Kit (Red, Elab Fluor®647)	20/50/100 Assays
E-CK-A425	One-step TUNEL Flow Cytometry Apoptosis Kit (Red, Elab Fluor®555)	20/50/100 Assays

• TUNEL In Situ Apoptosis Kit (HRP-DAB Method) •

E-CK-A331	TUNEL In Situ Apoptosis Kit (HRP-DAB Method)	20/50/100 Assays
-----------	--	------------------

A full range of TUNEL detection solutions to meet the various needs of your TUNEL experiments!

■ Elabscience® 2022 In Situ TUNEL High IF Publication (partial)

Cat.No.	Literature
E-CK-A320	Stem cell microencapsulation maintains stemness in inflammatory microenvironment(<i>International Journal of Oral Science</i> IF=24.897)
E-CK-A322	Long-term monitoring of intravital biological processes using fluorescent protein-assisted NIR-II imaging (<i>Nature Communications</i> IF=17.694)
E-CK-A320	Gut microbiota modulate radiotherapy-associated antitumor immune responses against hepatocellular carcinoma Via STING signaling (<i>Gut Microbes</i> IF=9.434)
E-CK-A322	Platelet membrane-camouflaged nanoparticles carry microRNA inhibitor against myocardial ischemia-reperfusion injury (<i>Journal of Nanobiotechnology</i> IF=9.429)
E-CK-A320	Self-assembly of DNA nanostructure containing cell-specific aptamer as a precise drug delivery system for cancer therapy in non-small cell lung cancer(<i>Journal of Nanobiotechnology</i> IF=9.429)
E-CK-A320	5-Methoxyflavone-induced AMPKα activation inhibits NF-κB and P38 MAPK signaling to attenuate influenza A virus-mediated inflammation and lung injury in vitro and in vivo(<i>Cellular & Molecular Biology Letters</i> IF=8.702)
E-CK-A331	Effects of hydrogen-rich saline in neuroinflammation and mitochondrial dysfunction in rat model of sepsis-associated encephalopathy (<i>Journal of Translational Medicine</i> IF=8.44)
E-CK-A321	UC-MSCs promote frozen-thawed ovaries angiogenesis via activation of the Wnt/β-catenin pathway in vitro ovarian culture system (<i>Stem Cell Research & Therapy</i> IF=8.079)

Elabscience Biotechnology Inc.

Web: www.elabscience.com

Tel: 1-240-252-7368

Email: techsupport@elabscience.com

Fax: 1-240-252-7376